



Kia māma te ako me te whakaaro pai ki ngā tika o te Tamaiti

WHĀNAU PUKAPUKA - WHĀNAU KURA HANDBOOK

Mai te awa o te atua ki Tauharā māunga

Ko Taupo te mōana

Ko Waitahanui te awa

Ko Pākira te mārāe

Ko Hinearō te wharekai

Ko Pākira te Tāngata

Ko Ngāti Tūtemohuta te Iwi

HE KÖRERO TĪMATANGA

Kia whai Kororia Honore Harerua Kia koe Ihoa o Nga Mano

Tuauriuri whai ioio tonu ki te rangi, ki te whenua I

te nui o tōna Kororiatanga

Mātua Tama Wairua Tapu me Nga Anahera Pono

me te Mangai tatu Ihoa

ki nga Tuākana Wairua, Arepa, Omeka, Piriwiritua ,

Hamuera

Manaakitanga mai mātou e kimi nei i ngā tapuwae ō ō mātou tupuna

Tūwherahia mai ngā huarahi i mua, i muri, ki ngā taha anō hoki

mā koutou e ngā Anahera Pono hei tiaki

hei manaaki i a mātou

E hikoi atu nei i te ao o ngā tūpuna

tae noa ki te hāora hoki mai ki tēnei ao hurihuri

Ngā mahi i mahia e rātou i te wā i ā rātou e hikoi ana

i runga i te mata o te whenua

kia kore whai wahi e pā mai ki ngā whakatupuranga hei patu ia mātou

Māu e te Mātua, Tama, Wairua Tapu me ngā Anahera Pono me te Māngai

NGĀ URI WHAKATIPURANGA Ō PĀKIRA

Te Kura o Waitahanui sets as its foundation for **Pakira, Tutemohuta** and Tuwharetoa history, alongside its stories and people. We envision a future where descendants of Pakira are confident and comfortable conducting themselves in both a māori and tauīwi world. Te Reo Māori is integrated into all of our learning, providing a safe platform for our beginning speakers and a programme of extension for our fluent speakers. Our Marae, our Maunga, our Awa, our Moana, our Whenua is our classroom. Our Pakeke, our Mātua, our Hāpori, our Kaimahi and our Tamariki are our teachers.

“Tū ki te marae, tau ana ki te ao”

KUHU TAMAITI KI ROTO I TE KURA

Te Kura o Waitahanui is a special character institution, that has made a commitment to its foundations of whakapapa and connectedness to its mana whenua, mana mōana, mana tāngata, mana tīpuna. Therefore the school embraces an enrolment process that is specific to the needs of Pakira and his descendants.

To enrol at Te Kura o Waitahanui you must align to the following 3 kawa o te kura. In doing so you have already made a commitment to uphold the matauranga of our ancestors Pakira, Tutemohuta and Tuwharetoa. The kawa for enrolment are as follows:

1. Tutemohuta te Ao

You are and will continue a life long commitment to supporting a world developed around what it is to be Ngāti Tutemohuta

2. Pono ki te reo me ōna tikanga

You are and will continue a life long commitment to Te Reo Maori as a first language and the customs and traditions

3. He uri o Pakira

You whakapapa to the land and people (You are a descendant of Pakira)

As our elders recognise that our language, marae and culture is under threat of disappearing or at the very least of becoming a watered down version, it is important that we recognise this and make a commitment to effect transformational change and an emancipatory approach to education that is founded on Tino Rangatiratanga and delivered through a Kaupapa Māori paradigm. Te Kura o Waitahanui is committed to ‘raise generations of Pakira descent who are confident, competent and capable so that they may find their place on the marae and their place in the world.’

“Tu Pakira ki te Ao”

Te Kura o Waitahanui will explore the opportunities and navigate the possibilities, to meet the personal aspirations of our ākonga and contribute to the goals of our whanau, hapū, Iwi, community and nation of Aotearoa as well as our whakapapa connections back to te Moana-nui-a-Kiwa.

*Mai te Awa o te Atua ki Tauhara Maunga
Ko Taupo te Moana
Ko Pakira te Tangata
Ko Ngāti Tutemohuta te Iwi*

The pae whenua or boundary lines of Pakira extend from the **pūhau at Nukuhau**, out as far as the mihi bridge heading to **Repōroa**. It aligns with the **Kāweka** ranges and crosses to **Titiokura**, through the Ruahine ranges and onto the Kaimanawa ranges. From the ranges of the **Kaimanawa** you make your way up the Tongariro river to the mouth. From there you cross a straightline to **Motutaiko** and **head back to the beginning of the pūhau o Waikato**. This boundary was given to **Pākira by his Koro Mātua, Taniwha, Rakeipoho and Rereao** where his mana would preside to care for his generations to come.

In 1899 Te Ranginui Tahau II wrote to the Department of Education asking that a school be established at Waitahanui. Waitahanui Native School formally opened in **1905**.

Mr A Woodhead was first Headmaster whom his daughter Florence Harsant wrote the book, 'They call me Te Māri'. Mr Turuwhenua was the first Māori Principal, then Addie Wall nee Waititi (Hōani Waititi sister), Cazna Clarke, Erita Kīngi. Aroha Wall is the first former pupil from Te Kura o Waitahanui to return as a teacher, then Principal.

Originally Tahau had asked for the school to be erected in Rotongaio as that is where the population of Pakira's descendants were settled, however the education department choose the current site where the school is today and declared the land as education land from that time to now, without mana whenua consent. The school remains on this current site today.

Te Kura o Waitahanui sits with pride within the Village of Waitahanui on State Highway 1 approximately 10kms south of Taupō township. **It is a settlement that has been occupied and owned by Ngāti Tūtemohuta for at least 250 years**, lead by our very own Pākira, a descendent from Tūwharetoa, Tuamatua and Ngātoroirangi. Through much trials and tribulations Te Rangī Tāhau and his people showed their tenacity, resilience, and strong belief in Ngāti Tūtemohuta Iwi. health and well-being for our Māori language and for his mokopuna continuously looking towards the future for his people.

In 2016 Te Kura o Waitahanui, and whānau, travelled to Rotorua, to formally apply to become an affiliated member of Ngā Kura ā Iwi o Aotearoa. 2016 the whānau of Te Kura o Waitahanui travelled to Rotorua o Kahumamatamamoe, to formally apply to become an affiliated member of Ngā Kura ā Iwi o Aotearoa. This tono was accepted and we proudly base our curriculum on the kōrero o neherā pertaining to **Ngāti Tūtemohuta** and **Ngāti Tūtemohutatanga**. Knowledge invested, taught, shared conducive of the Iwi, for the Iwi, by the Iwi o Ngāti Tūtemohuta.

We firmly believe that if our mokopuna are educated to be strong in their own identity then they will stand confident in today's world. Our kura is in the process of developing strategies that reconnect us with the lost knowledge of the past and integrating matauranga of Pakira, his descendants, hapu and Iwi into the everyday educational life of our mokopuna. This pathway will ensure we instil the values of our matapono back into the hearts of the mokopuna who our ancestor look over in the hope that we remember who they are.

“Mā te iwi, Mo te Iwi”

Te Ohaaki (Our Vision) He whakatauki nā Pākira mo Pākira mārae, hēoi he taura here aroha te whakatauki nei ki āna uri whakatipu, ki tōna kāwai whakapapa ā Te Rangitāhau.

“Nui te kai, nui te aroha”

Te Tauākī (Our Mission Statement)

“Kia māmā te ako me te whakaaro pai ki nga tika o te tamaiti ”

nā Koro Tiger Te Raureti Mataara Waara

Ko ngā Mātāpono o te Kura (Our Kura Values)

- Te Ahikaa
- Whakapapa
- Rangatiratanga
- Kaitiakitanga
- Whanaungātanga

Te Marautanga tō Te Kura o Waitahanui (Our Curriculum)

“Mō Tūtemohuta Iwi, Mā te Tūtemohuta iwi, E ai ki Tūtemohuta iwi!”

Te Kura o Waitahanui sits alongside the umbrella of Kura ā Iwi. Waitahanui kura must ensure all mokopuna obtain strong knowledge of **Te Āo ō Ngāti Tūtemohutatanga** and what it encompasses.

There are 3 pou that underpin Ngā Kura ā Iwi o Aotearoa:

- Whai Tukuihotanga
- Whai Hauora
- Whai Matauranga

Te Kura o Waitahanui has 5 Mātāpono that are intertwined in all we do:

Ahikā, Whanaungatanga, Whakapapa, Kaitiakitanga, Rangatiratanga

“Mai Te Awa o Te Atua ki Tauhara Maunga”.

Pākira is the tuākana of all mārae in Te Hikuwai. Our connections with All mārae of Te Hikuwai me te Matapuna are very important to us. Ngāti Tūtemohuta are well known for being intelligent people who follow the epitome of ‘manaaki i te tangata’.

“Tūwharetoa, he iwi mana, he iwi toa”

The tūpuna Pākira of Ngāti Tūtemohuta is a descendent from Tūwharetoa, Tuamata and Ngātoroirangi, the famed navigator and Tōhunga of the Te Arawa waka. Pākira is son of Waikari and Paremōkai and is the grandchild of Rongomaipatuiwi. Pākira married Hinearō nō Tūhoe and had a son named Tūtemohuta 1. Te Rangitāhau is a descendant of Pākira and was also a Rangatira of Tūtemohuta Iwi, in which he fought and held mana for the hapū and would constantly fight for the land that Pākira and all his descendants rightfully owned.

Te Kura o Waitahanui and its people continue to this day the connections and love we have towards our Arikitunga Te Heuheu. Arohamauroa ki Te Whare Heuheu.

Our Tutemohutatanga allows our mokopuna to acknowledge deeper connections, to sustain, to follow the footsteps of their ancestors. 2018 Te Kura o Waitahanui established such connections with Te Arawa, Mataatua Iwi, Ngāti Pūkeko, Ngāti Awa, Te Awa o te Atua. Accomodating us on Te Hāhuru mārae. Such visual connections alongside Historical recollections allow our tamariki to be empowered, to seek truth that their ancestors were once great Navigators. In continuation following year Te Kura o Waitahanui travelled to the beginning of our existence to Te Marae o Tāputāpuātea o Ra’iatea. The home of our poignant ancestor, and great Tōhunga Ngātoroirangi.

‘E kore au e ngaro, he kākano ahau i ruia mai i Rangiātea’

Ngāti Tūtemohuta have been lead by loyal compassionate leaders, and consistently continues to so both then to now. It is evident that the humility, abundance of love and understanding for the well-being of its people and Iwi begins with Pākira and runs through the veins of its Uri Whakatipu. Our mokopuna are always strong, they are hard workers, and love being amongst their Iwi. Therefore, It is the Kura o Waitahanui responsibility to guide and prepare and support all mokopuna and all their endeavours, whether it be inside or outside of Ngāti Tūtemohuta.

Te Tihi o Tauhara (Our Graduate Profile)

“Kia ara te ua”

We believe in a holistic education that is values based and distinctly Ngāti Tūtemohuta in its entirety. We are staunchly committed to ensuring our tamariki cherish our reo, our people and our whenua. Pākira is known to be a man of his word. His love for his people and their entire well-being demonstrates a man of humility, respect, compassion. Pākira was a very committed and hardworking man. This trait continues amongst his people.

“Arohatia Te Reo”, “Arohatia Te Tangata”

“Arohatia Te Whenua”

KO WAI MĀ NGĀ RINGA RAUPĀ?

Kaitiaki ō ngā Whare:

Edwyna Wall

Kaitiaki Whenua:

Noel McMahon

Kaihautū o te Waka Kawe i ngā Mokopuna:

Kiri Wawatai /Aroha Wall-Mcmahon

Kaitiaki Pūtea & Tari:

Takiora Wall/Ina Waara

Kaiāwhina:

Kiri Wawatai

Taina Coopr

Kirsten Pitiroi

Kairīwhī

Horiana Rolleston

Pouāko:

Denton Pitiroi

Hinearō Wall (maternity Leave)

Kenneth Wall

Terina Wall

Mania Crosby (Mangakaha)

Aroha Wall-McMahon(Tumuāki/Wharekura)

Takiora Wall (Wharekura Tau 11-12)

Tumuāki

Aroha Wall-McMahon (Kaiāko/Tumuāki)

Pou Apihā/Wharekura Kaiāko

Takiora Wall / Ina Waara

KO WAI MĀ TE POUMARUMARU?

Pou Whakarae:

Tumuaki:

Kaimahi Rep:

Whānau:

(Board of Trustees)

Ngatoru Wall

Aroha Wall-McMahon

Takiora Wall

Sandra Andrews

Melissa Wainohu

Raiha Johns





Ngā Tikanga Ringa Raupā

Learning Kura Hours for Mokopuna

Monday – Friday 8:45 – 2.45pm

Kaiāko in Kura

Monday-Friday 8:10 - 4/4:30 pm

Hui Kaiāko (Tūrei 3:10 pm - 4:30 pm)

Tari (Office Hours)

Monday - Friday 9am – 2pm

Contact Details

Landline: 07 378 4511

Cellphone: 027 5822729

Email: aroaha.wall-memahon@waitahanui.school.nz

Takiora.Wall@waitahanui.school.nz

Postal Address: 107 State Highway 1

RD 2, Waitahanui

Taupō 3378

Kura Website: www.waitahanui.school.nz

KO NGĀ KAUPAPA E HĀPAI ANA (OTHER INFORMATION)

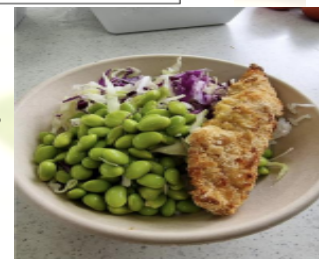
Ka Ora Ka Ako - Pākira Mārae Lunch in Schools Programme.

Kai is provided for Below is the menu set for the first 4 weeks. He Reka!!

MENU Term 1, 2024

	Mane	Tūrei	Wēnerei	Taite	Paraire
1	Beef for nachos Salad Cornchips	Chicken salad wrap Yogurt Popcorn	Cauli Mac n cheese Garlic bread	Chicken rice bowl	Beef & salad Burger Baked chips
2	Butter chicken Beans Rices	Chicken salad roll Yoghurt Popcorn	Roast chicken Baked veges Stuffing	Mince & Cheese wrap	Ham, egg & salad sandwich
3	Spag Bolognaise _____	Chicken rice bowl	Cauli Mac n cheese Garlic bread	Curry chicken Rice veges	Pumpkin Soup Garlic bread Chicken drumstick
4	Mince & cheese wraps	Butter chicken Rice Beans	Ham, Egg & salad sandwich	Roast chicken Baked veges Stuffing	Chicken & salad burgers

Healthy, delicious lunches are provided **5 Days a week for ALL mokopuna**. These are of **no cost** to our tamariki and **replace the need for whānau to organise lunchboxes**. Breakfast, Morning tea, snacks, access to clean cold water are provided in all Akomanga everyday from 8am -2:30pm. **We are a sugar junk free kura. Please do not send your tamariki to Te Kura o Waitahanui with chocolate biscuits, sweets, energy and fizzy drinks or chips in their bag/lunchbox.** We have “special days” for junk food so unless you are purchasing for the whole school, please leave all treats at home.



2024 We are asking all Whānau for 100% support towards our Lunch in schools Programme this year



Absences

All whānau must contact the kura either: by phone, Skooloop, Akomanga Facebook page when their tamaiti/mokopuna is to be away from kura by 8.30am. Those whānau who have tamariki who travel on the kura bus must inform Kiri & Taina by 7am. Tamariki safety is paramount, and we rely on our whānau to ensure we know when they will not be attending kura.

Breakfast Club

Te Kura o Waitahanui is a member of the Kickstart. All tamariki are invited to have a shared parakuihi each day at kura from 8:10 am - 2:30 pm

Fruit in School's Programme

Te Kura o Waitahanui is part of the Fruit in School's Programme whereby all tamariki and staff can access fresh fruit daily.

Milk in School's Programme

Te Kura o Waitahanui is very fortunate to receive milk for every tamaiti at kura. This is available most days and like each of the above programmes commences by week 3 of each term.

Kids Can Programme

Te Kura o Waitahanui is part of the Kids Can programme enabling free access to snacks, raincoats, shoes and kutu products. If you would like to access any of these products, please contact Whaea Takiora.

Duffy Books in Homes

In 2018 we are fortunate to re-join the Duffy Books in Homes Programme. Our lucky tamariki will be bringing home books to share with whānau and keep forever. Very exciting!

He Tipu - Taupo Greening

Te Kura o Waitahanui is part of the Taupō Greening Schools programme. Te Kura o Waitahanui is hoping to combined such teaching. We are looking to partake in all kaupapa with He Tipu, a world of Taiao where our mokopuna have a connection through the spiritual world of Te Wao nui ā Tāne, and their Whakapapa to the whenua. We plan to establish a relationship to visit weekly to support, then reciprocate such knowledge back to our kura. A large, productive Maara Kai, Orchard, kohinga rongoa Māori, Mauritau area and raise some chickens for daily egg collection. We will be creating a compost area and worm farm and be working towards becoming He Kura Para Kore.

Te Kura o Waitahanui are currently working on our Programme Manaaki i te Tamaiti - Te Poutiriao o te Aroha

A programme where Kaiāko of Tūtemohuta whakapapa learn to build longevity relationships. Our mokopuna mean so much to us at our kura, it is important they know how valued they are for their Iwi. We know all tamariki have the right to a learning environment that is engaging, positive and safe and of connection to Tutemohuta Whakapapa. We do not condone any acts of violence and work together with whānau in the stance against 'whakaiti tāngata'. All whānau are expected to assist with the development and implementation of any programmes required to help mokopuna who may struggle within this area.

Digital Citizenship

All tamariki and whānau are expected to sign Te Kura o Waitahanui Digital Citizenship agreement before tamariki are able to use any devices at kura. Tamariki is not allowed to search and/or access sites that have not been approved by their kaiako.

Dental, Vision, Hearing Services

Dental, Vision and Hearing care for Te Kura o Waitahanui is provided free of charge. The mobile dental van will visit annually and the Public Health Nurse visits to check eyes and ears. However, if you have concerns about the teeth, vision or hearing of your tamariki please ensure you get them checked by your own G.P. 2024 will in Term 1



EOTC (Education Outside the Classroom)

Place-based learning is a key component of our kura curriculum. All whānau are required to sign the **Blanket Consent** form for **localised haerenga** and promptly return permission slips for any haerenga outside of the district or overnight.

Pick Up and Drop Off

Te Kura o Waitahanui opens for tamariki at **8.20am**. Class commences at 8:45. Please do not drop off tamariki any earlier to ensure they are adequately always supervised. The kura day concludes at 2.45pm. Please ensure you are on time to pick up your tamariki to ensure they are adequately supervised at all times.

Policies & Plans

All our policies and key documents such as our Charter and Annual Plan are freely accessible to all whānau.

Kāhui Pakeke Kuia Horiaana

Te Kura o Waitahanui values the role of our pakeke within our day-to-day learning. Their knowledge base and positive presence within our kura is invaluable and welcome at all times.

Sunsmart Kura

Please ensure your tamariki have their kura pōtae each day in Terms 1 & 4. We do not allow caps as they do not adequately protect the neck from the sun. We have sunblock at kura but encourage each whānau to apply their own sunblock at home prior to coming to kura.

Medication

ENSURE the office has accurate details of all medical conditions and any corresponding medication that maybe needed. If your child has asthma, it is imperative that all of the kaiako are aware and know where their inhaler is located at all times.

If your child is allergic to bees or any foods, you NEED to ENSURE each kaiako is aware of this to enable us to react accordingly should any symptoms show. Asthma and Allergies kill.

Sports & Skills

All whānau know someone who has a knowledge base or skill that would interest some of our tamariki. This maybe include sports, arts, singing, fishing, diving, eeling, raranga, taiaha, kapahaka, musical instruments, fly making, gardening, science, maths, financial literacy, karakia, storytelling, drama, dance, anime, animation, rapping, design, cooking, rongoa, sewing, carving, taiaha, poi etc. We encourage all whānau to contribute to our kura learning programme and would love to hear from you how you can do this.

5-Year-Old Transition to Kura (From Te Kohanga Reo o Waitahanui)

1. Please ensure you have completed the enrolment process at least 2 months prior to your child turning 5.
2. Kura visits commence 6 weeks prior to their 5th birthday.
3. The first two visits (1x morning each) are spread over two weeks and on a day mutually agreeable by their upcoming Kaiako and the whānau. Please note: A parent/caregiver is expected to remain with the transitioning child during these two morning visits to ensure they are comfortable, and relationships can start to be formed.
4. The next two weeks may include up to 2x morning visits each week. These are to be arranged directly with the kaiako of Mangakaha and are dependent on how settled the individual child seems. The kaiako may request an adult remains with the child if this seems necessary.
5. The remaining two weeks may include up to 2x whole day (independent) visits each week. Once again this is to be arranged with the Mangakaha kaiako ensuring the best interests of each child always remains central.

WHAKAURU TAMAITI - ENROLMENT PROCESS

Te Kura o Waitahanui is a special character institution, that has made a commitment to its foundations of whakapapa and connectedness to its mana whenua, mana moana, mana tangata, mana tipuna, therefore the school embraces an enrolment process that is specific to the needs of Pākira and his descendants.

As our elders recognise that our language, marae and culture is under threat of disappearing or at the very least of becoming a watered-down version, it is important that we recognise this and make a commitment to effect transformational change and an emancipatory approach to education that is founded on Tino Rangatiratanga and delivered through a Kaupapa Māori paradigm.

To enrol at Te Kura o Waitahanui you must align to the following:

3 kawa o te kura. In doing so you have already made a commitment to uphold the matauranga of our ancestors **Pākira, Tutemohuta** and **Tuwharetoa**.

The kawa for enrolment are as follows:

1. **Tutemohuta te Ao**

(You are and will continue a lifelong commitment to supporting a world developed around what it is to be Ngati Tutemohuta)

2. **Pono ki te reo me ōna tikanga**

(You are and will continue a lifelong commitment to Te Reo Māori as a first language and the customs and traditions)

3. **He uri o Pakira**

(You whakapapa to the land and people. You are a descendant of Pakira)

Tikanga to the enrolment process :

- Step 1:** Enrolment form completed online. Received by Admin.
- Step 2;** Enrolment passed to Ohu Uiui
- Step 3:** Ohu group meet – pre-checklist
- Step 4:** Hui with whanau commitment/marae affiliation etc, level of language)
- Step 5:** Ohu group meet to confirm enrolment process.
- Step 6:** Whanau notified if school is right for them or not through letter.
- Step 7:** Successful mokopuna partake in whakatau at marae/kura:
Whanau sign Kawenata of commitment
- Step 8:** Mokopuna begin Kura

Forms to complete

1. Standard enrolment form
2. Electronic form
3. Blanket consent
4. Cyber safety policy
5. Uniform order
6. Stationery list order
7. Whanau booklet
8. Kawenata commitment agreement

Enrolments will take place every 6 weeks, from forms received to acceptance and whakatau. Te Kura o Waitahanui will recognise whanau success and mokopuna will be placed in their classes according to language abilities.

Te Kura o Waitahanui is committed to ‘raise generations of Pakira descent who are confident, competent and capable so that they may find their place on the marae and their place in the world.’

“Tu Pakira ki tōku Ao”

Please Note

All whānau must sign the kura EOTC & Cyber Safety forms prior to commencing. Proof of identification is required, and Immunisation Certificates will be photocopied for kura records. All changes of address and contact details must be provided promptly to the office. Finally, as a whānau member of Te Kura o Waitahanui we need to you be involved in the education of your tamariki and our kura life which includes learning Te Reo Māori, fundraising, working bees, wānanga and being a kanohi kitea at our Marae. Your input and the voice of our tamariki is imperative for our kaupapa to succeed.

