



Te Kura o Waitahanui 1905

Kia māma te ako me te whakaaro pai ki ngā tika o te Tamaiti

Whānau Kura Pukapuka 2023

Rotongaio, Waitahanui, Ngāti Tutemohuta

E Ihōa o ngā Mano, mātua, tama, wairuatapu, me te māngai ae

E ngā uri whakatipu o Tūtemohuta, nei rā te mihi matakui, matakoro ki a koutou katoa.

This handbook provides general information about Te Kura o Waitahanui including our special character, history, key dates, and information that maybe useful. For further clarification, or information not included, please contact me personally at the school office on 07 3784511.

Te Kura o Waitahanui has a rich, proud history. All tamariki that attend our kura are embraced within a learning environment that is happy, stimulating, and supportive. Te Reo Māori is naturally integrated into all our learning providing a safe platform for our beginning speakers and a programme of extension for our fluent speakers. Our Marae, our Maunga, our Awa, our Moana, our Whenua is our classroom.

Our Pakeke, our Mātua, our Hāpori, our Kaimahi and our Tamariki are our teachers.

“Tū ki te marae, tau ana ki te ao”

Te Kura o Waitahanui welcomes all whānau to join our kura whānau and we embrace all cultures and ethnicities. We only ask that our whānau are committed to actively helping all our tamariki realize their passions, overcome their challenges, and reach their potential. Above all, we ask for kindness to self, others, and the environment to be normalized both within kura and within the home.

I see my role as a huge privilege and am humbled to follow a long list of Tumuaki, Kaiako and Kaimahi who have paved the way before me. Nei rā te ōwha atu ki a koutou katoa kua para te huarahi mā ngā tamariki me ngā mokopuna ō kui mā, ō koro mā. Mei kore koutou, ka noho pōhara mātou te iwi o Ngāti Tūtemohuta. Tēnā koutou katoa.

Nāku iti nei

Te Poumarumarū & Tumuāki

Te Kura o Waitahanui

KO WAI MĀTOU?

Te Kura o Waitahanui is located in a small settlement known today as Waitahanui on State Highway 1 approximately 12kms south of Taupō township. It is a settlement that has been occupied by Ngāti Tūtemohuta for at least 250 years. In 1899 Te Rangi Tahau II wrote to the Department of Education asking that a school be established at Waitahanui. Waitahanui Native School formally opened in 1905 with Mr A Woodhead as the first Headmaster.

In 2016 Te Kura o Waitahanui, and whānau, travelled to Rotorua, to formally apply to become an affiliated member of Ngā Kura ā Iwi o Aotearoa. This tono was accepted and we proudly base our curriculum on the kōrero ō neherā pertaining to Ngāti Tūtemohuta and Ngāti Tūtemohutatanga. We firmly believe that if our tamariki are educated to be strong in their own identity then they will stand confident in today's world.

Te Ohaaki (Our Vision)

“Nui te kai, nui te aroha”

Te Tauākī (Our Mission Statement)

“Kia māmā te ako me te whakaaro pai ki nga tika o te tamaiti ”

Ko ngā Mātāpono o te Kura (Our Kura Values)

- Te Ahikaa
- Whakapapa
- Rangatiratanga
- Kaitiakitanga
- Whanaungatanga

Te Marautanga tō Te Kura o Waitahanui (Our Curriculum)

Ko te reo kia tika, ko te reo kia rere, ko te reo kia Māori

He Kura Reo Māori tēnei. Mai te ao ki te pō ka ngāna mātou kia rongō ai ki tōna reka i ngā wā katoa. We are a Level 1 Māori Medium Kura a Iwi that has our Tūtemohutanga as a prime focus.

“Mō te iwi, Mā te iwi, E ai ki te iwi!”

As a Kura ā Iwi and we are currently part of the pilot programme for Te Ara Toa. There are three pou within Te Ara Toa o ngā Kura ā Iwi:

- **Whai Tukuihotanga**
- **Whai Matauranga**
- **Whai Hauora.**

“Mai Te Awa o Te Atua ki Tauhara Maunga”.

Te Kura o Waitahanui is committed to ensuring our tamariki have a strong, practical knowledge and understanding of Ngāti Tūtemohutātanga as a basis for learning about the wider world. Our marae, urupā, maunga, awa, moana, manga, wāhi tapu are our akomanga. Our pakeke are our puna reo. Our Tūtemohutātanga is our principle marau and our hononga with Tūtetawha, Waipahihi, Nukuhau and Korohe are very important to us.

“Tūwharetoa, he iwi mana, he iwi toa”

We also identify strongly as Ngāti Tūwharetoa and our whakapapa to Ngatoroirangi.

Te Kura o Waitahanui aims to assist the development of tamariki who are very confident in themselves and open to extending their knowledge, understand and experiences throughout Aotearoa and the wider world.

Te Tihi o Tauhara (Our Graduate Profile) **Kia Tū Pākira ki tōku Ao**

“Kia ara te ua”

We believe in a holistic education that is values based and distinctly Ngāti Tūtemohuta in its entirety. We are staunchly committed to ensuring our tamariki cherish our reo, all people, and our whenua.

“Arohatia Te Reo”

“Arohatia Te Tangata”

“Arohatia Te Whenua”

KO WAI MĀ NGĀ RINGA RAUPĀ O Ā TĀTOU KURA?

Kaitiaki ō ngā Whare:	Edwyna Wall
Kaitiaki Whenua:	Noel McMahon
Kaihautū o te Waka Kawe i ngā Mokopuna:	Rocky Cuthbert
Kaitiaki Pūtea/Tari/i ngā mea katoa:	Takiora Wall (Kaiāpihā)
	Ina Waara (kaitari)
Kaiāwhina:	Kiri Wawatai
	Taina Cooper
	Kirstin Pitiroi (Te Mōkai)
	Kuia Horiana
	Michelle Wi (Hakinakina)
Pouako:	Hinearō Wall
	Denton Pitiroi
	Moenohotu Maui
	Mania Crosby
	Te Aroha Wall-McMahon
	Terina Wall
	Kenneth Wall
Tumuaki:	Te Arohanui Wall-McMahon

KO WAI TE POUMARUMARU? (Board of Trustees)

Pou Whakarae:	Ngatoru Wall
Tumuaki:	Te Arohanui Wall-McMahon
Kaimahi BOT rep:	Takiora Wall
Whānau:	Sandra Andrews
Whānau:	Melissa Wainohu
Whānau:	Raihā Johns

Kura Hours

Monday – Friday

8:45 – 2.45pm

Office Hours

Monday – Friday 9am – 1pm

Contact Details

Landline: 07 378 4511

Cell phone: 0275822729

Email: aroha.wall-mcmahon@waitahanui.school.nz

Takiora.Wall@waitahanui.school.nz

Postal Address: 107 State Highway 1

RD 2

Waitahanui

Taupō 3378

Kura Website: www.waitahanui.school.nz

Kura Facebook: Te Kura o Waitahanui - Private Page

KO NGĀ KAUPAPA E HĀPAI ANA (OTHER INFORMATION)

Absences

All whānau must contact the kura either: by phone, Skoo loop, akomanga Facebook page when their tamaiti/mokopuna is to be away from kura by 8.30am. Those whānau who have tamariki who travel on the kura bus must inform Matua Rocky, Whaea Melissa by 7am. Tamariki safety is paramount, and we rely on our whānau to ensure we know when they will not be attending kura.

Lunch in School's

Healthy, delicious lunches are provided daily for our tamariki from Kura Kai Pākira mārae. These are of no cost to our tamariki and replace the need for whānau to organise lunchboxes. If you are wanting to pack extra kai for your tamariki these are to be restricted to **sandwiches, fruit, and crackers please.**

Breakfast Club

Te Kura o Waitahanui is a member of the Kickstart. All tamariki are invited to have a shared parakuihi each day at kura.

Fruit in School's Programme

Te Kura o Waitahanui is part of the Fruit in School's Programme whereby all tamariki and staff can access fresh fruit daily.

Milk in School's Programme

Te Kura o Waitahanui is very fortunate to receive milk for every tamaiti at kura. This is available most days and like each of the above programmes commences by week 3 of each term.

Kids Can Programme

Te Kura o Waitahanui is part of the Kids Can programme enabling free access to snacks, raincoats, shoes and kutu products. If you would like to access any of these products, please contact Whaea Takiora.

Duffy Books in Homes

In 2018 we are fortunate to re-join the Duffy Books in Homes Programme. Our lucky tamariki will be bringing home books to share with whānau and keep forever. Very exciting!

Taupō Greening Programme

Te Kura o Waitahanui is part of the Taupō Greening Schools programme. We are wanting to establish a large, productive Maara Kai, Orchard, kohinga rongoa Māori, Mauritau area and raise some chickens for daily egg collection. We will be creating a compost area and worm farm and be working towards becoming He Kura Para Kore.



PB4L

Te Kura o Waitahanui is part of the Positive Behaviour for Learning Programme. We believe all tamariki have the right to a learning environment that is engaging, positive and safe. We do not condone any acts of violence and will work together with whānau in the stance against bullying. All whānau are expected to assist with the development and implementation of any programmes required to help tamariki who may struggle within this area.

Digital Citizenship

All tamariki and whānau are expected to sign Te Kura o Waitahanui Digital Citizenship agreement before tamariki are able to use any devices at kura. Tamariki is not allowed to search and/or access sites that have not been approved by their kaiako.



Dental, Vision, Hearing Services

Dental, Vision and Hearing care for Te Kura o Waitahanui is provided free of charge. The mobile dental van will visit annually and the Public Health Nurse visits to check eyes and ears. However, if you have concerns about the teeth, vision or hearing of your tamariki please ensure you get them checked by your own G.P

EOTC (Education Outside the Classroom)

Place-based learning is a key component of our kura curriculum. All whānau are required to sign the **Blanket Consent** form for **localised haerenga** and promptly return permission slips for any haerenga outside of the district or overnight.

Pick Up and Drop Off

Te Kura o Waitahanui opens for tamariki at **8.20am**. Class commences at 8:45. Please do not drop off tamariki any earlier to ensure they are adequately always supervised. The kura day concludes at 2.45pm. Please ensure you are on time to pick up your tamariki to ensure they are adequately supervised at all times.

Policies & Plans

All our policies and key documents such as our Charter and Annual Plan are freely accessible to all whānau.

Kāhui Pakeke Kuia Horiana

Te Kura o Waitahanui values the role of our pakeke within our day-to-day learning. Their knowledge base and positive presence within our kura is invaluable and welcome at all times.

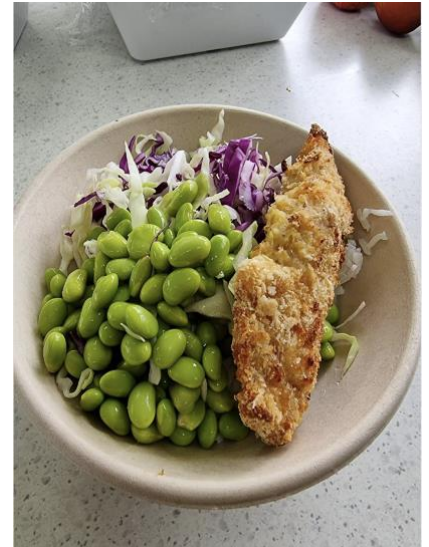


Kai Hauora - Kura Lunches

We are a sugar free, chippie free kura. Please do not send your tamariki to Te Kura o Waitahanui with chocolate biscuits, sweets, energy and fizzy drinks or chips. We have “special days” for junk food so unless you are purchasing for the whole kura please leave all treats at home. We have beautiful cold water within every classroom to always enable each of our tamariki easy access.

Sunsmart Kura

Please ensure your tamariki have their kura pōtae each day in Terms 1 & 4. We do not allow caps as they do not adequately protect the neck from the sun. We have sunblock at kura but encourage each whānau to apply their own sunblock at home prior to coming to kura.



Medication

ENSURE the office has accurate details of all medical conditions and any corresponding medication that maybe needed. If your child has asthma, it is imperative that all of the kaiako are aware and know where their inhaler is located at all times. If your child is allergic to bees or any foods, you NEED to ENSURE each kaiako is aware of this to enable us to react accordingly should any symptoms show. Asthma and Allergies kill.

Sports & Skills

All whānau know someone who has a knowledge base or skill that would interest some of our tamariki. This maybe include sports, arts, singing, fishing, diving, eeling, raranga, taiaha, kapahaka, musical instruments, fly making, gardening, science, maths, financial literacy, karakia, storytelling, drama, dance, anime, animation, rapping, design, cooking, rongoa, sewing, carving, taiaha, poi etc.

We encourage all whānau to contribute to our kura learning programme and would love to hear from you how you can do this.



5-Year-Old Transition to Kura (From Te Kohanga Reo o Waitahanui)

1. Please ensure you have completed the enrolment process at least 2 months prior to your child turning 5.
2. Kura visits commence 6 weeks prior to their 5th birthday.
3. The first two visits (1x morning each) are spread over two weeks and on a day mutually agreeable by their upcoming Kaiako and the whānau. Please note: A parent/caregiver is expected to remain with the transitioning child during these two morning visits to ensure they are comfortable, and relationships can start to be formed.
4. The next two weeks may include up to 2x morning visits each week. These are to be arranged directly with the kaiako of Mangakaha and are dependent on how settled the individual child seems. The kaiako may request an adult remains with the child if this seems necessary.
5. The remaining two weeks may include up to 2x whole day (independent) visits each week. Once again this is to be arranged with the Mangakaha kaiako ensuring the best interests of each child always remains central.



ENROLMENT PROCESS

Te Kura o Waitahanui is a special character institution, that has made a commitment to its foundations of whakapapa and connectedness to its mana whenua, mana moana, mana tangata, mana tipuna, therefore the school embraces an enrolment process that is specific to the needs of Pākira and his descendants.

As our elders recognise that our language, marae and culture is under threat of disappearing or at the very least of becoming a watered-down version, it is important that we recognise this and make a commitment to effect transformational change and an emancipatory approach to education that is founded on Tino Rangatiratanga and delivered through a Kaupapa Māori paradigm.



To enrol at Te Kura o Waitahanui you must align to the following 3 kawa o te kura. In doing so you have already made a commitment to uphold the matauranga of our ancestors Pākira, Tutemohuta and Tuwharetoa.

The kawa for enrolment are as follows:

1. Tutemohuta te Ao (You are and will continue a lifelong commitment to supporting a world developed around what it is to be Ngati Tutemohuta)
2. Pono ki te reo me ōna tikanga (You are and will continue a lifelong commitment to Te Reo Māori as a first language and the customs and traditions)
3. He uri o Pakira. You whakapapa to the land and people (You are a descendant of Pakira)

Tikanga to the enrolment process

Step 1: Enrolment form completed online. Received by Admin.

Step 2: Enrolment passed to Ohu Uiui

Step 3: Ohu group meet – pre-checklist (phone -call or messaging) Set hui date.

Step 4: Hui with whanau (ie. commitment/marae affiliation etc, level of language)

Step 5: Ohu group meet to confirm enrolment process.

Step 6: Whanau notified if school is right for them or not through letter.

Step 7: Successful mokopuna partake in whakatau at marae/kura:

Whanau sign Kawenata of commitment

Step 8: Mokopuna begin Kura

Forms to complete

1. Standard enrolment form
2. Electronic form
3. Blanket consent
4. Cyber safety policy
5. Uniform order
6. Stationery list order
7. Whanau booklet
8. Kawenata commitment agreement

Enrolments will take place every 6 weeks, from forms received to acceptance and whakatau. Te Kura o Waitahanui will recognise whanau success and mokopuna will be placed in their classes according to language abilities.

Te Kura o Waitahanui is committed to ‘raise generations of Pakira descent who are confident, competent and capable so that they may find their place on the marae and their place in the world.’

“Tu Pakira ki tōku Ao”

Please Note

All whānau must sign the kura EOTC & Cyber Safety forms prior to commencing. Proof of identification is required, and Immunisation Certificates will be photocopied for kura records. All changes of address and contact details must be provided promptly to the office. Finally, as a whānau member of Te Kura o Waitahanui we need to you be involved in the education of your tamariki and our kura life which includes learning Te Reo Māori, fundraising, working bees, wānanga and being a kanohi kitea at our Marae. Your input and the voice of our tamariki is imperative for our kaupapa to succeed.